

MASTER
CONICAL ENGINEERING

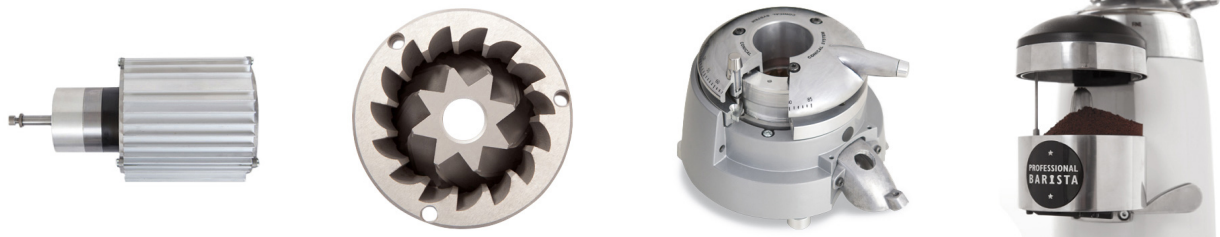
K10 Master Conic PB

BARISTA RULE

MOTOR 935 W
CONICAL BURRS Ø 2.65 IN

KEY SPECIFICATIONS

Motor output	935	W
Revolutions per minute	325	rpm
Ø Burrs	Conic 2.65	in
Espresso point production	37	lb/h
Hopper capacity	3.74	lb
Height x width x depth	26.77 x 8.46 x 15.76	in
Net weight	37.24	lb



KEY FEATURES

- ◆ “Parallel System” grind regulator lock
- ◆ 4 cm height riser with side air vents
- ◆ Double fan
- ◆ Ergonomic Doser lid for easy removal
- ◆ Special Barista doser without builtin tamper
- ◆ Aluminum star doser with high efficiency sweepers
- ◆ Full aluminum grinding collar adjustment and fork
- ◆ Aluminum portafilter rest
- ◆ High resistance power switch
- ◆ Illuminated on/off switch

