

PKF DOSE BY WEIGHT



QUESTION TODAY AND EVERY DAY

On demand grinder with integrated scale built entirely in aluminum, with an incorporated high precision load cell that guarantees a shot-to-shot dose consistency of ± 0.3 g in each dose.

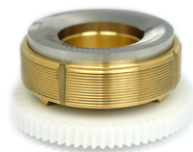
The system incorporates 4 different modes of operation and is capable of recognizing up to 10 different portafilters, which should be tared before every service.

Manual mode allows the system to be used as if it were a conventional scale, allowing to tare any container and grind directly into it.

MOTOR 950 W
BURRS Ø 83 MM

KEY ESPECIFICATIONS

Motor output	950	W
Revolutions per minute	350	rpm
Ø Burrs	83	mm
Time/7gr	2,7	seg
Hopper capacity	1.300	gr
Height x width x depth	650 x 215 x 400	mm
Net weight	18	Kg



KEY FEATURES

- ◆ Portafilter detector
- ◆ “Parallel System” grind regulator lock
- ◆ 1, 2 or 3 On-Demand ground coffees
- ◆ Touch control screen
- ◆ Motor with fan
- ◆ Three positions switch with by-pass
- ◆ Universal holder

ELECTRONIC FEATURES

- ◆ Multilanguage Display
- ◆ Modes: Pre-selection - Automatic - Instant-Manual
- ◆ Protection menu access by Password
- ◆ Total and Partial shot counter
- ◆ Notice of change of Burrs
- ◆ Date and time

