

MASTER
CONICAL ENGINEERING

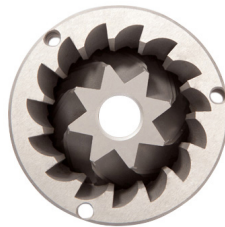
E10 Master Conic OD

INNOVATION INTERSECTS TRADITION

MOTOR 800 W
CONICAL BURRS Ø 2.65 IN

KEY SPECIFICATIONS

| | | |
|-----------------------------|----------------------|------|
| Motor output | 800 | W |
| Revolutions per minute | 412,5 | rpm |
| Ø Burrs | Conic 2.65 | in |
| Espresso point production | 33.59 | lb/h |
| Time x dosis Espresso (7gr) | 1.6 | s |
| Hopper capacity | 3.74 | lb |
| Height x width x depth | 26.77 x 8.46 x 15.76 | in |
| Net weight | 49 | lb |



KEY FEATURES

- ◆ “Parallel System” grind regulator lock
- ◆ 1, 2 or 3 On-Demand ground coffees
- ◆ Precise dosing
- ◆ Touch control screen
- ◆ Double fan
- ◆ Three positions switch with by-pass
- ◆ Universal adjustable height porta filter holder

ELECTRONIC FEATURES

- ◆ Multilanguage Display
- ◆ 3 Modes: Pre-selection - Automatic - Instant
- ◆ Protection menu access by Password
- ◆ Total and Partial shot counter
- ◆ Notice of change of Burrs
- ◆ Date and time
- ◆ Quantity lock configurable by weight ground

